

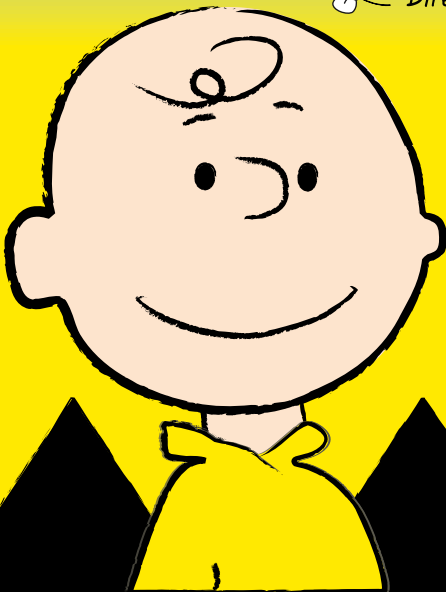
JEFFERSON COMMUNITY THEATRE
presents

You're A Good Man,
**CHARLIE
BROWN**

Based on The Comic Strip "Peanuts" by Charles M. Schulz

Book, Music and Lyrics by
CLARK GESNER

Directed by Amy Howard & Jamie Allen



JULY 2022
8-10 & 15-17

Friday/Saturday @ 7:30p
& Sunday @ 2:30p
at the Jefferson High School PAC

HARMONY INSURANCE

INSURE WITH HARMONY

AUTO • HOME • LIFE • BUSINESS • WORKPLACE BENEFITS

Harmony Insurance
is proud to support
Jefferson Community Theatre.

706-521-4141

www.InsureWithHarmony.com

Welcome

Welcome to our summer production of **'You're A Good Man, Charlie Brown'**! Whether you are a long time supporter of Jefferson Community Theatre, or this is your first time joining us, we thank you. Putting together a production takes many hands. There are those that you see on stage today, those that collected your money for admission, those that worked behind the scenes, and those of you holding this program right now, that will join together when you applaud this performance. You are part of this show as much as any of the others, and we are humbled that you are here with us today.

Jefferson Community Theatre started in 2009 as a vision from a group of citizens. Over the years we have put on a wide variety of productions involving a multitude of people. We would be honored to have you share your time and talents with us, on or off stage. We have opportunities for all sorts of talents, from selling ads to local businesses (please support those businesses that support us), acting on stage, building, painting, directing, and so much more! Please take a moment to speak to a board member and let us get you connected.

Now, please sit back and enjoy your visit with the Peanuts Gang. Laugh out loud, suspend reality, and show your appreciation with your applause. We look forward to seeing you again this year and for many more years to come; bringing quality entertainment for and by our community. Again, we thank you for joining us.

JEFFERSON COMMUNITY THEATRE BOARD OF DIRECTORS

Jamie Allen • Christine Dalton • Cindy Davis • Pete Fuller

Erwin Greene • Amy Howard • Diana Norton-Bagwell



Special Thanks

To the Jefferson City School System and the City of Jefferson for their continued support and partnership with JCT.

Crawford W. Long Museum • Jefferson Civic Center
Tom Kimmel and Elizabeth Kelly for technical assistance.
Cindy Davis for donation of raffle basket items.

Family of cast members for transportation, support, volunteering for random tasks, and dedication to this production.

JEFFERSON COMMUNITY THEATRE PLAYBILL SPONSORS

- AGM Real Estate, LLC
- Crawford W. Long Museum
- Cream & Shuga
- EGreene Designs & Production Services
- Four Columns Hair Salon
- Harmony Insurance
- House Electric
- Inland Realty
- Integrity Counseling & Personal Development
- Jackson EMC
- Kay's: a love for food & home
- Peak Rehabilitation
- Sign Gypsies
Jefferson-Braselton-Hoschton
- Sugar 'n' Spice Cafe & Catering
- Swirlee's Sweet Shop & Gifts



Integrity Counseling & Personal Development

Supports the cast and crew of
"You're A Good Man, Charlie Brown"
and encourages everyone to find someone to
journey with you to become the best version
of yourself... friend, family, or professional.

706.387.0573

www.integrityofjefferson.com

Follow us on Facebook @ICPDJefferson



SIGN GYPSIES

JEFFERSON-HOSCHTON-BRASELTON

*Serving Bogart, Braselton,
Commerce, Hoschton,
Jefferson, Pendergrass,
Statham, and Winder*

CONTACT US: 706-870-4505
signgypsiesjefferson@gmail.com
www.signgypsiesjefferson.com



140 Mahaffey Street • Jefferson, Georgia 30549
706.387.5042 • www.creamandshuga.com

dgm
REAL ESTATE, LLC

706-215-0035

“a great move!”



We are a PROUD SPONSOR of
Jefferson Community Theatre!



Swirlee's

Sweet Shop & Gifts

Come visit us on the North Public Square
in Downtown Jefferson
for frozen treats, candy, and gifts!



www.swirleesjefferson.com



E. GREENE DESIGNS & PRODUCTION SERVICES

ENTERTAINMENT DESIGN &
PRODUCTION MANAGEMENT

*At E. Greene Designs
we provide the audio-visual solutions
to bring your vision to life!*



PRODUCTION PLANNING & MANAGEMENT services to ensure that clients receive the best audio-visual package to suit their specific needs and budget.



SOUND DESIGN & ENGINEERING for a variety of events including: Theatre productions, musical performances, conferences, church services, special events, and more.



LIGHT DESIGN & ENGINEERING for a variety of events including: Theatre productions, musical performances, dance recitals, banquets, special events, and more.



VIDEOGRAPHY & PROJECTION to enhance in-person events and productions, as well as provide options for virtual live-streaming, outdoor movies, and more.

Erwin Greene

706.352.9466

erwin@egreenedesigns.com

Diana Norton

706.309.0307

diana@egreenedesigns.com

www.egreenedesigns.com

Facebook @egreenedesigns

Instagram @egdgeorgia

You're A Good Man,

CHARLIE BROWN

Based on The Comic Strip "Peanuts" by Charles M. Schulz

Book, Music and Lyrics by
CLARK GESNER

Additional Dialogue by Michael Mayer
Additional Music & Lyrics by Andrew Lippa

*Presented by Jefferson Community Theatre
Directed by Amy Howard & Jamie Allen*

JULY 8-10 & 15-17, 2022

*by arrangement with Concord Theatricals on behalf
of Tams-Witmark LLC - www.concordtheatricals.com*

Original Direction for this version of
"You're A Good Man, Charlie Brown" by Michael Mayer
Originally Produced in New York by Arthur Whitelaw and Gene Persson



Charlie Brown and the entire Peanuts gang explore life's great questions as they play baseball, struggle with homework, sing songs, swoon over their crushes, and celebrate the joy of friendship.

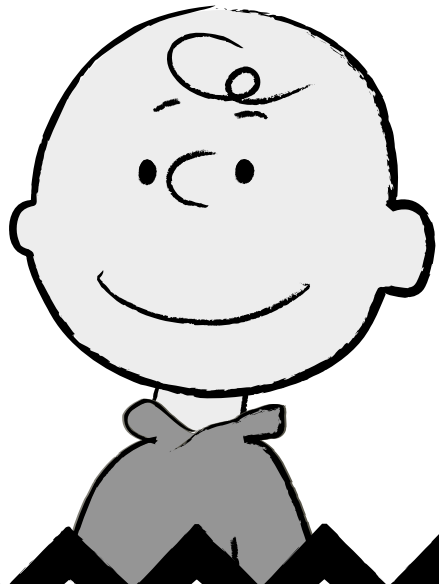
Act One

- Opening
- You're a Good Man, Charlie Brown
- Lunch Hour
- Schroeder
- Spaghetti
- Snoopy
- Moon
- My Blanket and Me
- Queen Lucy: Melodrama
- Coathanger
- The Kite
- Valentines
- The Doctor Is In
- Ice Cream
- Art
- Beethoven Day
- Rabbit Chasing
- The Book Report

There will be a 15 minute intermission following act one.

Act Two

- The Red Baron: Melodrama
- My New Philosophy
- The Baseball Game
- Crabbiness Survey
- A Loving Little Brother
- Glee Club Rehearsal
- Snoopy
- Little Known Facts
- Suppertime
- Night Scene
- Happiness



From the Director

Whether you're young, old, or in between, odds are that the characters of the Peanuts Gang comic strip have given you smiles and laughter at some point in your life. Hopefully you'll feel that joy again as you watch this production of, "You're a Good Man, Charlie Brown". Our Peanuts Gang includes Lucy and her endless infatuation with Schroeder, Linus and his beloved blanket, Sally and her sassy attitude, Snoopy and his rich imagination, and his faithful friend Woodstock. And then there is Charlie Brown with all his insecurities and his crush on the mysterious little red headed girl. These characters take us through little moments that may seem insignificant but are filled with bigger meaning. They are meant to remind us that it's the simple things in life that gives us happiness.

Our goal is to entertain you (of course)! But we also want each of you to be transformed into a world that is simple and good at heart. We hope that this production can convey a sense of charming child-like wonder. My vision for this production was to bring our audience straight into the cartoon world of these beloved characters. I've worked hard to give you the feeling of stepping into the Peanuts' cartoon world with the scale, color, and design of the set. Our Assistant Director, Jamie Allen, has done a brilliant job of bringing her creative ideas to the choreography and movement of the characters. Thank you Jamie, for that and all the many other things you've done to make this production a success! Our young, talented cast has worked hard to bring the characters to life for you. Each of our cast members are new to the Jefferson Community Theatre stage. I have thoroughly enjoyed getting to know them. I want to personally thank each of these young actors for their energy and enthusiasm. I hope their talent amazes you as much as it has amazed me.

During the performance, we hope to take you away from a world filled with worries and trouble, and transport you to a world filled with innocence, forgiveness and love. May we be reminded that true happiness comes from the simple things in life. In the words of Charlie Brown, "For happiness is anyone and anything at all, that's loved by you." Enjoy the Show!

Amy Howard
Director



CAST

Sally Brown	Lily Connor
Lucy Van Pelt	Hannah Roberson
Snoopy	David Garcia
Schroeder	Benjamin Purdum
Charlie Brown	Jacob Johnson
Linus Van Pelt	Jack Johnson
Woodstock	Rosie Camp

CREW

Director	Amy Howard
Assistant Director	Jamie Allen
Producers	Christine Dalton & Erwin Greene
Music Director	Amy Howard
Choreographer	Jamie Allen
Stage Manager	Jamie Allen
Costumes	Amy Howard
Stagehands	Madeline Farnham & Hannah Hodges
Stage Design & Construction	Amy Howard
Lights	Savannah Walker
Sound	Darren Orr
Poster & Playbill Design	Diana Norton-Bagwell
Concessions	JHS Drama Dragons Booster Club





Rosie Camp as Woodstock

Rosie is a freshman at East Jackson High School. She has been involved with theater for eight years, in two different programs, JCT being her third. Some of her favorite roles include Rose from 'Alice and Wonderland' and Mary Sue Betty Bop Spoonapple in 'Dear Edwina Jr.'. Drama has always been the peak of her interests and she appreciates you coming to see the show!



Lily Connor as Sally

Lilian is a 16 year old sophomore at Jackson County High School. She has been in productions such as 'Legally Blonde', 'Grease', 'Elf Jr.' and more! She is very excited to put on a show, and even more excited to show you her amazing coat hanger project!



David Garcia as Snoopy

David has performed for EJCHS for the last two years, his favorite show by far being 'CLUE'. This is his first time getting involved with JCT, but he's excited to join in on the fun. Other than performing, he enjoys drawing, hanging out with his pets, and playing games with his brother and friends.



Jack Johnson as Linus

Jack is very excited to be part of this production. He was recently in the JMS production of 'Willy Wonka Jr.', as Grandpa George. Jack enjoys school, but especially enjoys playing football, performing arts, and Chess Club. You'll find him this summer conditioning for 7th grade football, rehearsing as Linus, or finding an unsuspecting soul to say "Check Mate" to. He wants to thank his Mom for all the transportation to his various adventures.



Jacob Johnson as Charlie Brown

Jacob is thrilled to be in his first ever JCT production as Charlie Brown. Although he has watched some of his five older siblings perform in chorus and theatre for over ten years, Jacob just began performing in musical theatre for the first time this year as Willy Wonka in the JMS production of 'Willy Wonka Jr.'. Jacob is in the JMS chorus, is a member of the Drama Dragons, and plays basketball. When not performing he enjoys binge watching musicals and tv shows, and hanging out with his friends, his family, and his dog, Allie. Jacob would like to thank his family, his teachers, his friends for their support, and the directors of this production (Amy & Jamie) for providing him this amazing opportunity.



Benjamin Purdum as Schroeder

Benjamin is a rising 8th grader at Jefferson Middle School and the youngest of four siblings. While this is his first time performing with JCT, it's not his first time on stage. Benjamin has been cast in his school's productions of 'The Jungle Book Kids', 'Dreamer' and most recently 'Willy Wonka Jr.' where he portrayed Charlie Bucket. When he's not acting Benjamin loves to sing, write stories, and travel.



Hannah Roberson as Lucy

This is Hannah's first production in Georgia, and playing Lucy has always been one of her dream roles. She just moved up here from Panama City, FL to live with her now fiancé, Savannah. Hannah has been in theatre since third grade. In her free time she loves singing, organizing her house, and playing with her dog PJ, and cat Maisey. She would like to thank everyone who has supported her, and a special shout out to her little brother, who unknowingly helped her method act her role as Lucy all these years.

visit www.jeffersoncommunitytheatre.com for more info



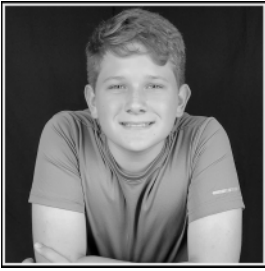
follow us on Facebook

@jeffersoncommunitytheatreGA

follow us on Instagram

@jeffersoncommunitytheatre





You're A Good Man, CHARLIE BROWN

*Based on The Comic Strip "Peanuts"
by Charles M. Schulz*

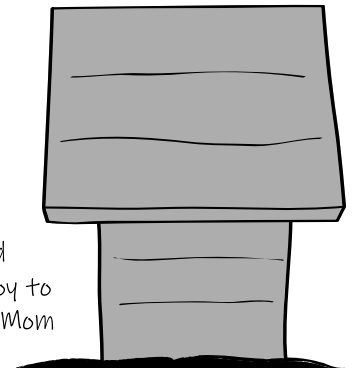


Jacob - So proud of you. Great job Charlie Brown!
You continue to amaze us with your talent. - Love, Famjam

Yo Jack... I mean Linus! We are SO proud
of you and love you! - Unks & Aunt Kate

We are so proud of you, Benjamin!
Break a leg! Suki Suki!! - The Fam

Jack - Way to go Linus! You have worked so hard
and are doing an amazing job. It is a complete joy to
see you on stage! I am SO proud of you! - Love, Mom



FREE MUSEUM ADMISSION DURING

DOG DAYS of SUMMER

When you bring
your dog with you
during the
month of July!

I pooch = I pass



Crawford W. Long
M U S E U M

28 College Street, Jefferson, GA 30549
(706) 367-5307 • www.crawfordlong.org

HOUSE ELECTRIC

The Lighting Experts



• Residential • Landscaping • Commercial

706-543-5280

1045 Baxter Street

www.HouseElectricAthens.com

Kay's

a love for food & home

95 LEE STREET
DOWNTOWN JEFFERSON
706.387.0326

home of Kay's chicken salad, sweet treats & gift boutique



Andy Garrison
706-369-1830

Inland Realty LLC
22 South Public Square
Jefferson, GA 30549

"Our success is based on your satisfaction."

*Peak Rehabilitation Physical Therapy
is pleased to support the Jefferson Community Theatre*



Peak
Rehabilitation ^{INC}
PHYSICAL THERAPY

Locations in Jefferson and Commerce

www.peakrehabpt.com

We are grateful to be your choice for physical therapy.

Four Columns Hair Salon

Cindy Davis
OWNER/STYLIST

Sherry Mahaffey
STYLIST



706.367.4247

211 Washington Street • Jefferson, Georgia 30549

Jefferson Community Theatre PRESENTS

The Legend of
**SLEEPY
HOLLOW**

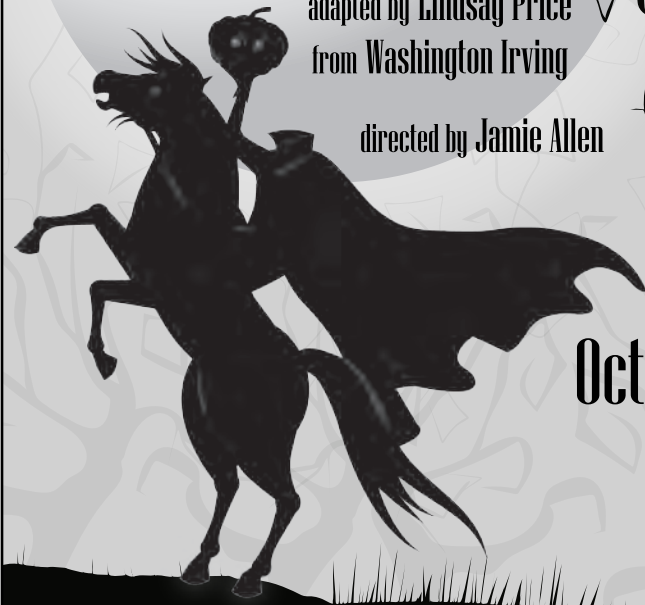
adapted by Lindsay Price
from Washington Irving

directed by Jamie Allen

October 2022

Auditions to be Announced

www.jeffersoncommunitytheatre.com



SUGAR 'N' SPICE



CAFE & CATERING

86 N. Public Square • Downtown Jefferson
Located inside the Crawford W. Long Pharmacy
www.sugarandspicejefferson.com • 706-387-1948

Sandwiches

Chicken Salad Croissant	\$5.45
Turkey Melt	\$5.45
Pimento Cheese	\$6.00
Pimento Cheese BLT	\$7.00
Crawford Long Club	\$7.00
Crawford Long Club Wrap	\$7.00
Classic Rueben	\$7.00
Grilled Chicken Wrap	\$7.00
Chicken Caesar Wrap	\$7.00
Ryan Gurley	\$7.00
Hot Ham & Cheese	\$5.45
Tuna Salad	\$6.45
BLT	\$5.45

Salads

House Salad	\$6.00
Chef Salad	\$8.00
Chicken Salad Plate	\$7.50
Salad Plate *	\$8.00

* choice of 3 sides or chicken salad & 2 sides

Daily Soup

Cup	\$4.00
Bowl	\$5.50
Soup & Salad	\$7.95
Soup & Sandwich	\$8.95

Sides

Potato Salad	\$3.00
Pasta Salad	\$3.00
Broccoli Salad	\$3.00
Congeaed Salad	\$3.00
Fresh Fruit	\$3.00
Grape Salad	\$3.00

Drinks

Small Soft Drink	\$2.25
Small Tea	\$2.00
Large Soft Drink	\$2.75
Large Tea	\$2.50

Dessert

Cake Slice	\$3.00
Brownie	\$2.00



BETTER

together

The Arts empower people. That's why Jackson EMC is proud to support the Arts through the Jefferson Community Theatre.

JACKSON
ELECTRIC MEMBERSHIP CORPORATION™

jacksonemc.com

